

Project At A Glance



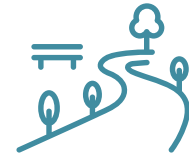
~TWO-THIRDS

Of this privately-owned land will be set aside for public parks & open spaces



ACTIVE PARK USES

Active recreation areas benefit the neighborhood & entire city



100+ ACRES

Dedication of privately-owned land to create open spaces, including Denver's 11th Regional Park



HUNDREDS OF AFFORDABLE HOMES

More than double the City's new requirement for affordable housing



MORE AFFORDABLE

Approx. 25% of all units will be deed-restricted affordable housing



BUILDING COMMUNITY

Safe places for the community to gather, walk, play, celebrate & build equity



AFFORDABLE FOR-SALE

Hundreds of for-sale affordable homes for low- and middle-income earners (70-120% AMI)



SUSTAINABILITY

Site-wide commitment to energy-efficient buildings, solar-ready rooftops, water-wise features & improved tree canopy

